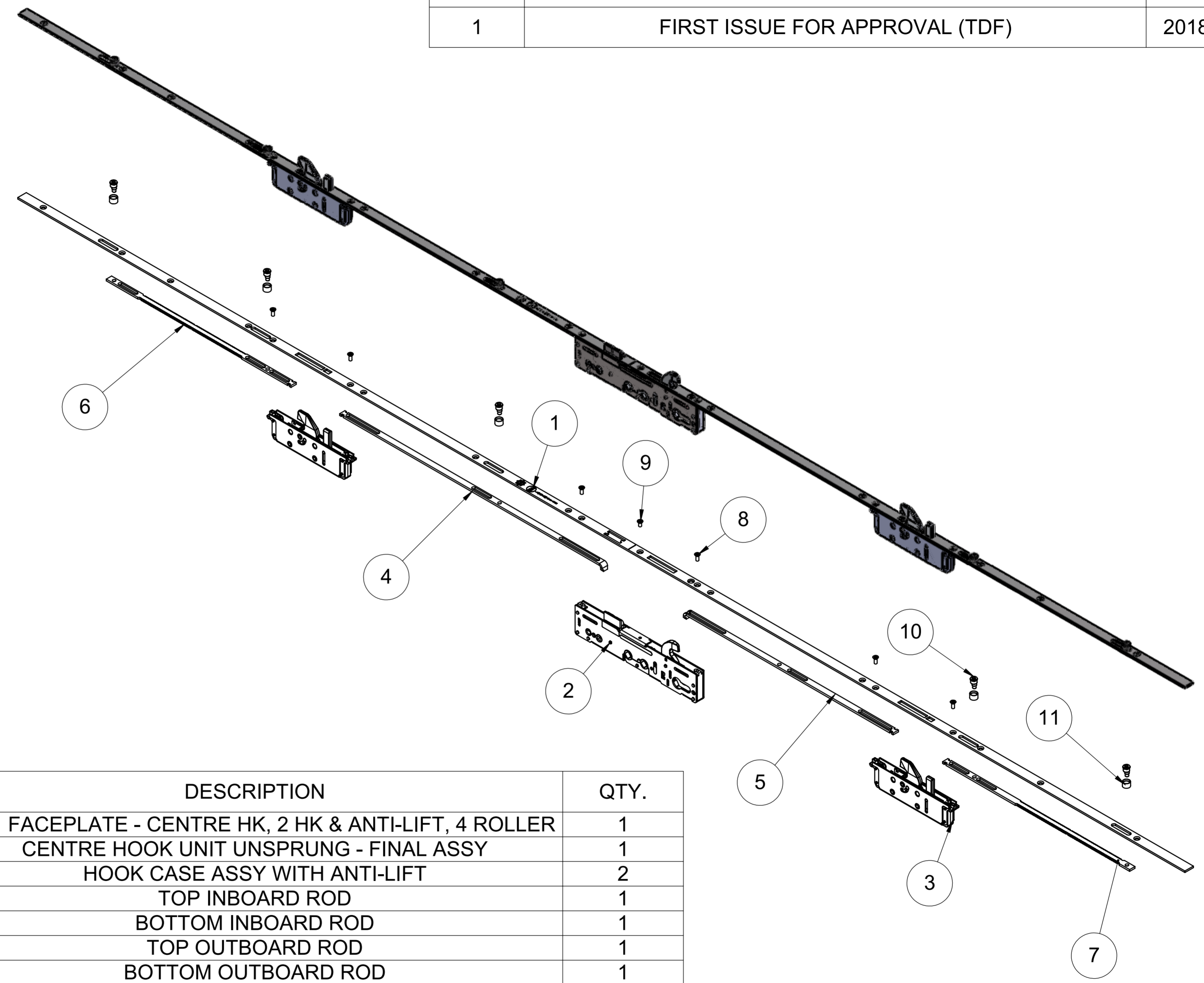


This work is copyright and no part may be reproduced, by any process, nor may any other exclusive right be exercised without the permission of ASSA ABLOY.

RECOMMENDED HARDWARE ACCESSORIES

ONE PIECE KEEP:
 YLK13-009L-296
 YLK13-010R-296

SHOOTBOLT SET:
 PLSB88-19



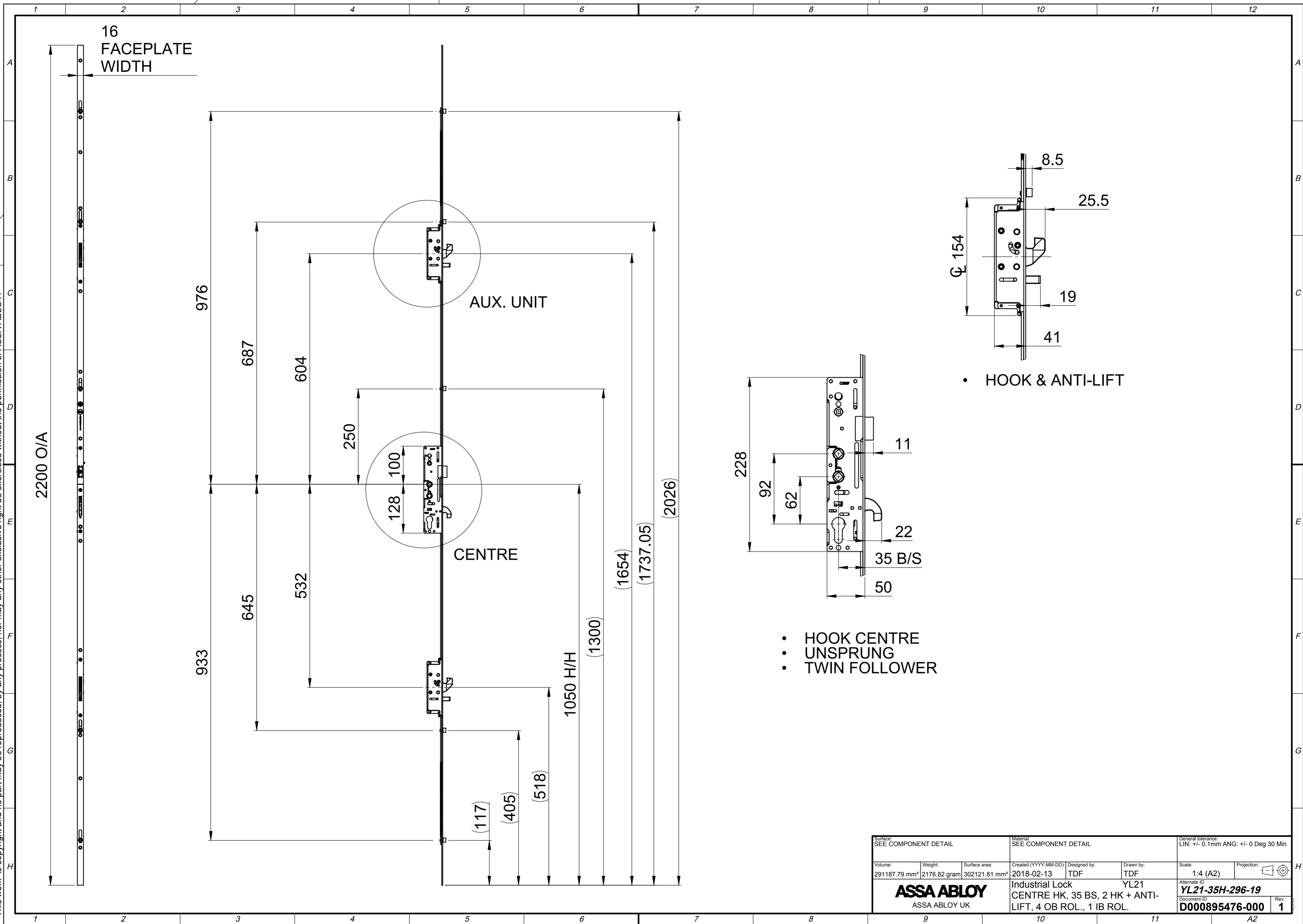
Revision	Description	Date
1	FIRST ISSUE FOR APPROVAL (TDF)	2018/03/07

ITEM NO.	PART NO.	DESCRIPTION	QTY.
1	YL21F-C006HK	YL21 FACEPLATE - CENTRE HK, 2 HK & ANTI-LIFT, 4 ROLLER	1
2	PL10-SA94F	CENTRE HOOK UNIT UNSPRUNG - FINAL ASSY	1
3	PL10-SA55-19-T	HOOK CASE ASSY WITH ANTI-LIFT	2
4	YL21T-C006-19	TOP INBOARD ROD	1
5	YL22B-C001-19	BOTTOM INBOARD ROD	1
6	YL21R-C002-19	TOP OUTBOARD ROD	1
7	YL22R-C002-19	BOTTOM OUTBOARD ROD	1
8	PL10-C181-19	M4 x 10MM T/TITE, TORX SCREW	6
9	PL10-C180-19	M4 x 8 TORX CSK	1
10	PL10-C031-19	ROLLER PIVOT PIN	5
11	PL10-C032-19	ROLLER (FOR LOCKS)	5

SEE FOLLOWING PAGES FOR DIMENSIONAL SPEC. & ROUTING DETAILS

Surface: SEE COMPONENT DETAIL		Material: SEE COMPONENT DETAIL		General tolerance: LIN: +/- 0.1mm ANG: +/- 0 Deg 30 Min	
Volume: 291187.79 mm³	Weight: 2176.82 gram	Surface area: 302121.81 mm²	Created (YYYY-MM-DD): 2018-02-13	Designed by: TDF	Drawn by: TDF
ASSA ABLOY ASSA ABLOY UK			Industrial Lock CENTRE HK, 35 BS, 2 HK + ANTI-LIFT, 4 OB ROL., 1 IB ROL.		Scale: 1:4 (A2)
			YL21 Alternate ID YL21-35H-296-19		Projection:
			Document ID D000895476-000		Rev.: 1

This work is copyright and no part may be reproduced, by any process, nor may any other exclusive right be exercised without the permission of ASSA ABLOY.

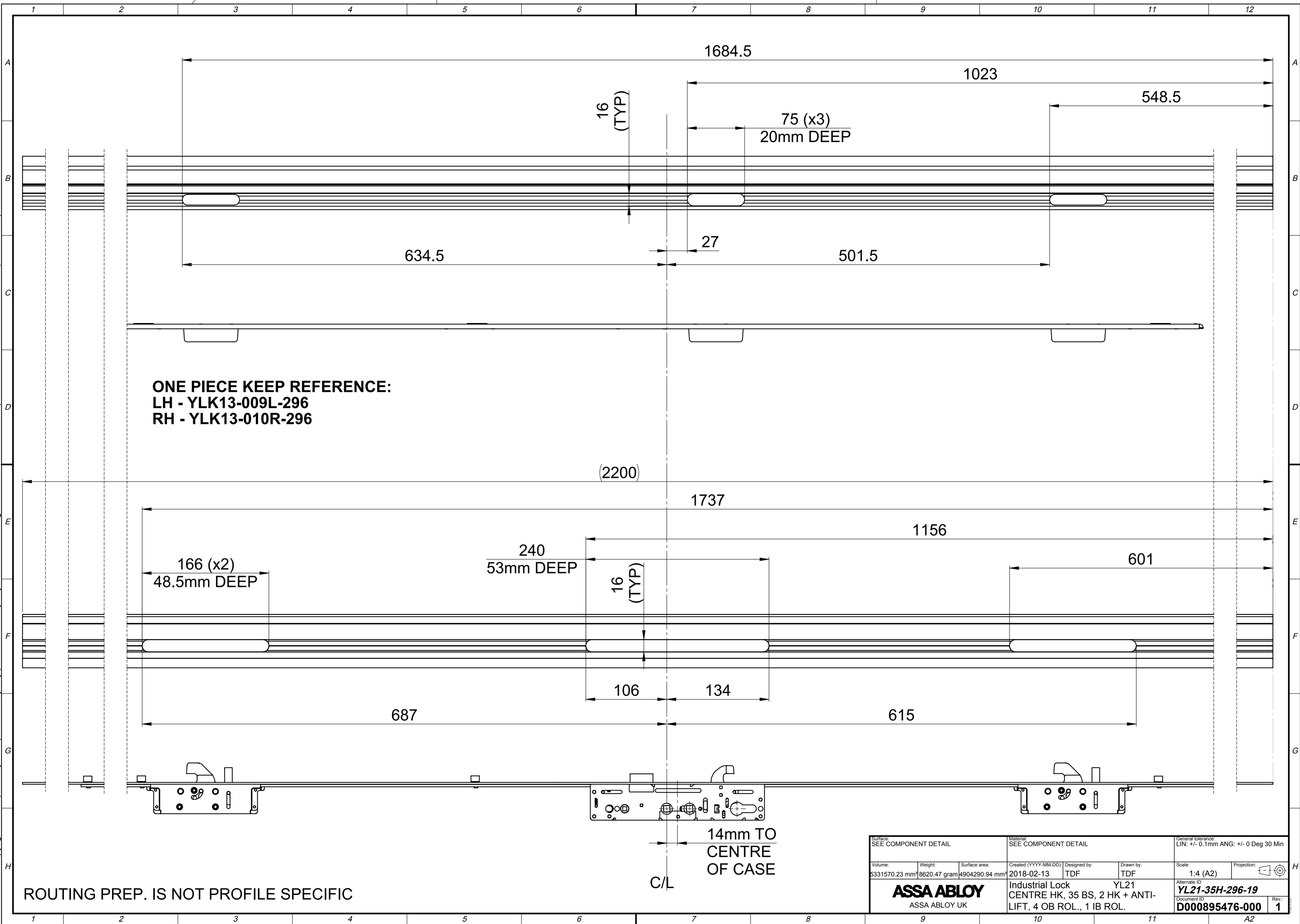


• HOOK & ANTI-LIFT

• HOOK CENTRE
 • UNSPRUNG
 • TWIN FOLLOWER

Surface: SEE COMPONENT DETAIL			Material: SEE COMPONENT DETAIL			General tolerance: LIN: +/- 0.1mm ANG: +/- 0 Deg 30 Min		
Volume: 291187.79 mm ³	Weight: 2176.82 gram	Surface area: 302121.81 mm ²	Created (YYYY-MM-DD): 2018-02-13	Designed by: TDF	Drawn by: TDF	Scale: 1:4 (A2)	Projection: 	
ASSA ABLOY ASSA ABLOY UK			Industrial Lock CENTRE HK, 35 BS, 2 HK + ANTI-LIFT, 4 OB ROL., 1 IB ROL.			Alternate ID YL21-35H-296-19		Rev.: 1
			Document ID D000895476-000			A2		

This work is copyright and no part may be reproduced, by any process, nor may any other exclusive right be exercised without the permission of ASSA ABLOY.



ONE PIECE KEEP REFERENCE:
LH - YLK13-009L-296
RH - YLK13-010R-296

166 (x2)
 48.5mm DEEP

240
 53mm DEEP

14mm TO
 CENTRE
 OF CASE
 C/L

ROUTING PREP. IS NOT PROFILE SPECIFIC

Surface: SEE COMPONENT DETAIL			Material: SEE COMPONENT DETAIL			General tolerance: LIN: +/- 0.1mm ANG: +/- 0 Deg 30 Min		
Volume: 5331570.23 mm³	Weight: 8620.47 gram	Surface area: 4904290.94 mm²	Created (YYYY-MM-DD): 2018-02-13	Designed by: TDF	Drawn by: TDF	Scale: 1:4 (A2)	Projection: 	
ASSA ABLOY ASSA ABLOY UK			Industrial Lock CENTRE HK, 35 BS, 2 HK + ANTI- LIFT, 4 OB ROL., 1 IB ROL.			Alternate ID YL21-35H-296-19		Rev.: 1
						Document ID D000895476-000		